



January 2017

NJPEOSH Recordkeeping – Annual Reminder

February 1st is the deadline to tabulate the Log of Work-Related Injuries and Illnesses (NJOSH-300). The Summary Log (NJOSH-300A) must be posted in a visible area for each establishment, where notices to employees are posted, from February 1 to April 30 of each year.

New Jersey requires all public employers to **record** occupational injuries and illnesses. In addition, certain serious injuries must be **reported** directly to New Jersey PEOSH within specified timeframes. The complete rules for recording and reporting injuries can be accessed at <http://nj.gov/health/peosh/record.shtml>

Recording of Occupational Injuries

There are two important forms for the recording of injuries. The *Log of Work-Related Injuries and Illnesses* (NJOSH-300) is a listing of work-related injuries and illness that is maintained throughout the year. Injuries and illnesses are entered into the *Log* within 7 days of being notified of the injury / illness. Five years of *NJOSH-300 Logs* must be readily available to NJPEOSH inspectors. The second form is the annual summary of work-related injuries, *NJOSH 300A Summary of Work-Related Injuries and Illnesses*. This summary is posted at each work establishment from February through April.

‘Work-related’ is defined as any event or exposure in the work environment either causing or contributing to the resulting condition, or significantly aggravating a pre-existing injury or illness. ‘Work-related’ is presumed for injuries and illnesses resulting from events occurring in the work environment, unless an exception given in OSHA 1904.5(b)(2) applies. Recordable work-related injuries and illnesses are those that result in:

- Death or loss of consciousness
- Days away from work, placement on restricted work activity, or a job transfer
- Medical treatment beyond first aid

Public employers must also record the following conditions if they have been determined to be work-related:

- Any needle stick injury or cut from an object that is contaminated with a potentially infectious material
- Any case requiring an employee to be medically removed under an OSHA health (chemical) standard
- A tuberculosis infection as evidenced by a positive skin test or diagnosis by a physician
- An employee’s audiogram reveals a specified hearing Standard Threshold Shift in one or both ears

Reporting of Serious Occupational Injuries to NJPEOSH

New Jersey Public Employers must report fatalities to NJPEOSH **within eight (8) hours** of the occurrence, and report work-related hospitalizations, amputations, or loss of an eye within **24 hours** by calling the 24-hour hotline (800)624-1644 or the 24-hour fax line (609)292-3749. Refer to the decision-making flow chart on pg. 2.

Links to additional resources

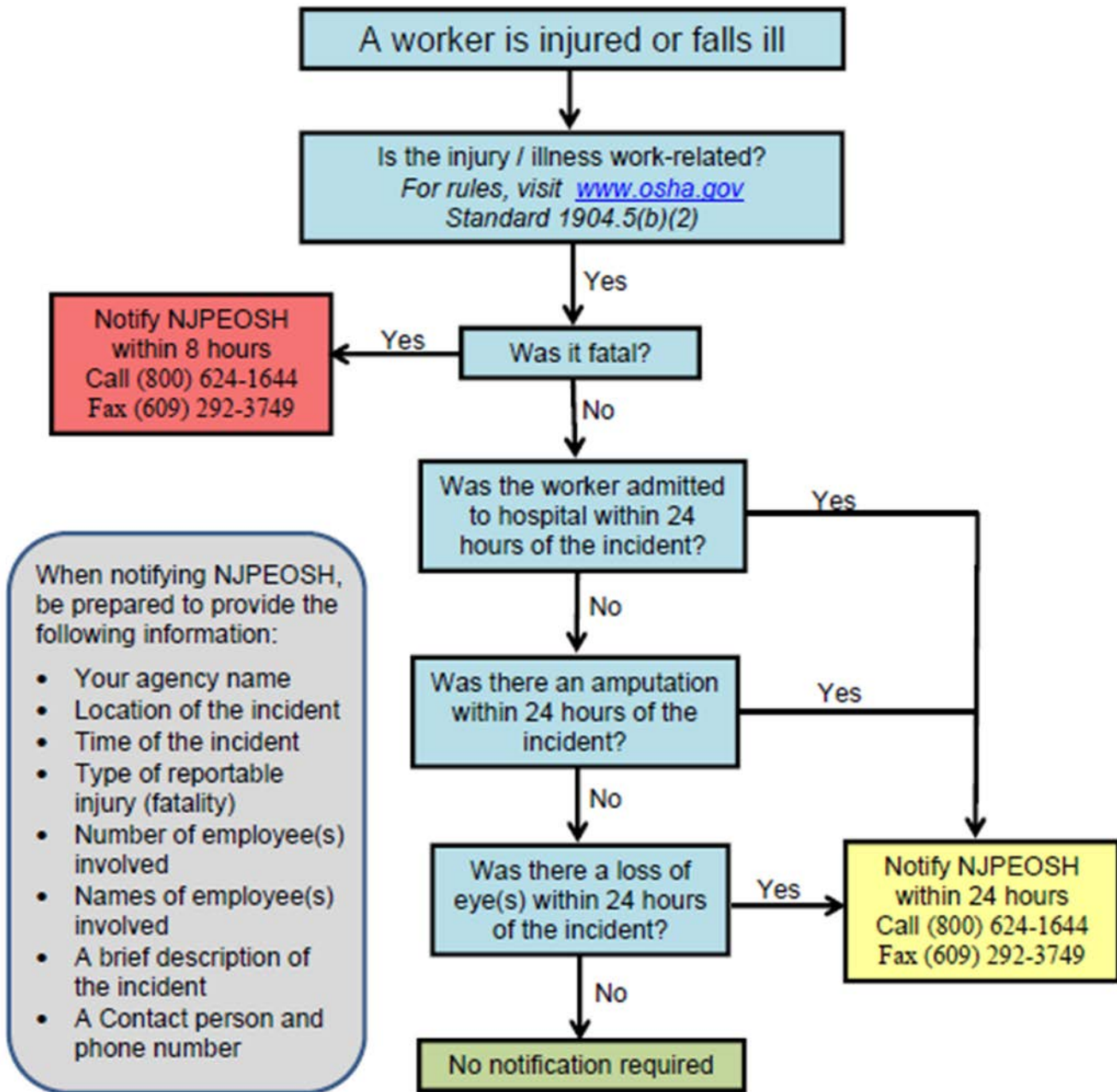
NJPEOSH 16-page guide to Recording and Reporting of Occupational Injuries and Illnesses is available at http://lwd.dol.state.nj.us/labor/forms_pdfs/lse/NJOSH300.pdf

The NJPEOSH revised Public Employee Alert #27 with the new reporting regulations is available at http://lwd.dol.state.nj.us/labor/forms_pdfs/lse/Alert27.pdf

Now is also a good time to verify the PEOSH poster is posted. A copy can be downloaded at http://lwd.dol.state.nj.us/labor/forms_pdfs/lse/wps35.pdf

This bulletin is intended for general information purposes only. It should not be construed as legal advice or legal opinion regarding any specific or factual situation. Always follow your organization's policies and procedures as presented by your manager or supervisor. For further information regarding this bulletin, contact your Safety Director at 877.398.3046.

NJPEOSH 2015 Injury Reporting Requirements



Notes:

- OSHA defines amputation as the traumatic loss of a limb or external body part, including a part, such as a limb or appendage, that has been severed, cut off (either completely or partially); fingertip amputations with or without bone loss; medical amputations resulting from irreparable damage; amputations of parts that have been reattached. Amputations do not include avulsions, enucleations, degloving, scalping, severed ears, or broken or chipped teeth.
- If a motor vehicle accident occurs in a construction work zone, you must report the fatality, in-patient hospitalization, amputation, or loss of an eye. If the motor vehicle accident occurred on a public street or highway, but not in a construction work zone, you do not have to report the fatality, hospitalization, amputation, or loss of an eye.
- A work-related fatality or in-patient hospitalization caused by a heart attack must be reported